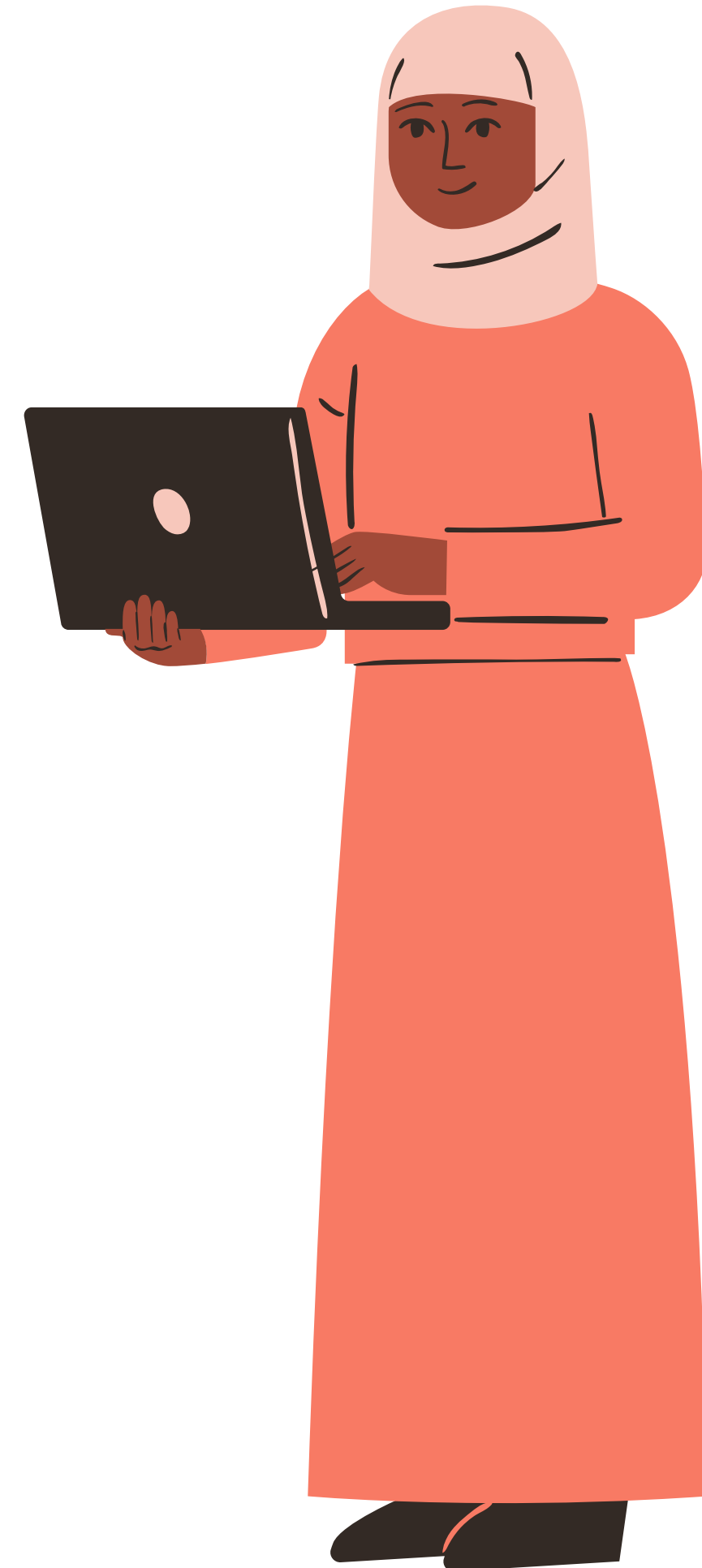
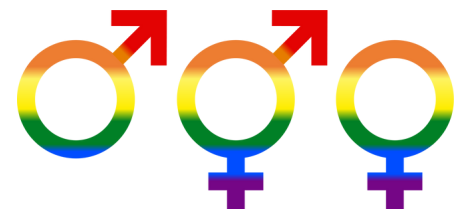


# Cheat Sheet 4: Using ChatGPT for Qualitative Data Collection & Analysis

Crafted by Salanga as part of the AI Training Series in Collaboration with CanWaCH in June 2024.



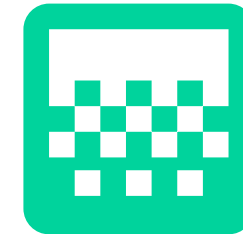
# Using ChatGPT for Qualitative Data Collection & Analysis



**Summarize Qualitative  
Research/Gender  
Analysis**



**Extract quotes from  
Qualitative Surveys**



**Write case  
studies/participant  
stories**



**Language  
Translation**



**Generate Codes and  
Themes**



**Design Qualitative  
Data Collection  
Tools & Guides**



**Review Results &  
Recommendations**



**Research Ethics and  
Feminist  
Approaches**

# Key Ethical Issues in Qualitative Analysis

- **Bias in Text Interpretation:** Inherits biases present in training data impact the interpretation.
- **Respect for Diversity and Inclusion:** Model may unintentionally marginalize certain voices or perspectives.
- **Privacy and Confidentiality:** Qualitative data may contain personally identifiable information or sensitive details.
- **Contextual Understanding:** May struggle with nuanced contextual understanding, leading to potential misinterpretation of the subtleties present in qualitative data.



# BEST PRACTICE

## KNOW YOUR STUFF

Know how to analyze your qualitative data first. Use ChatGPT as an assistant - not the primary researcher.

## UPGRADE\*

The paid version has improved research and analysis capabilities, memory, data protection ... etc.

## PROMOTE DATA PRIVACY

Turn off “improve the model for everyone.” Make any data you upload unidentifiable. Ask respondents for informed consent.

## COMPARE & DECLARE

Use different AI systems to do the same analysis and compare (Gemini, Microsoft Co-pilot). Cite ChatGPT: “Our project involved generating content with ChatGPT by OpenAI”.

**1 Summarizing Text**

**2 Extracting Quotes**

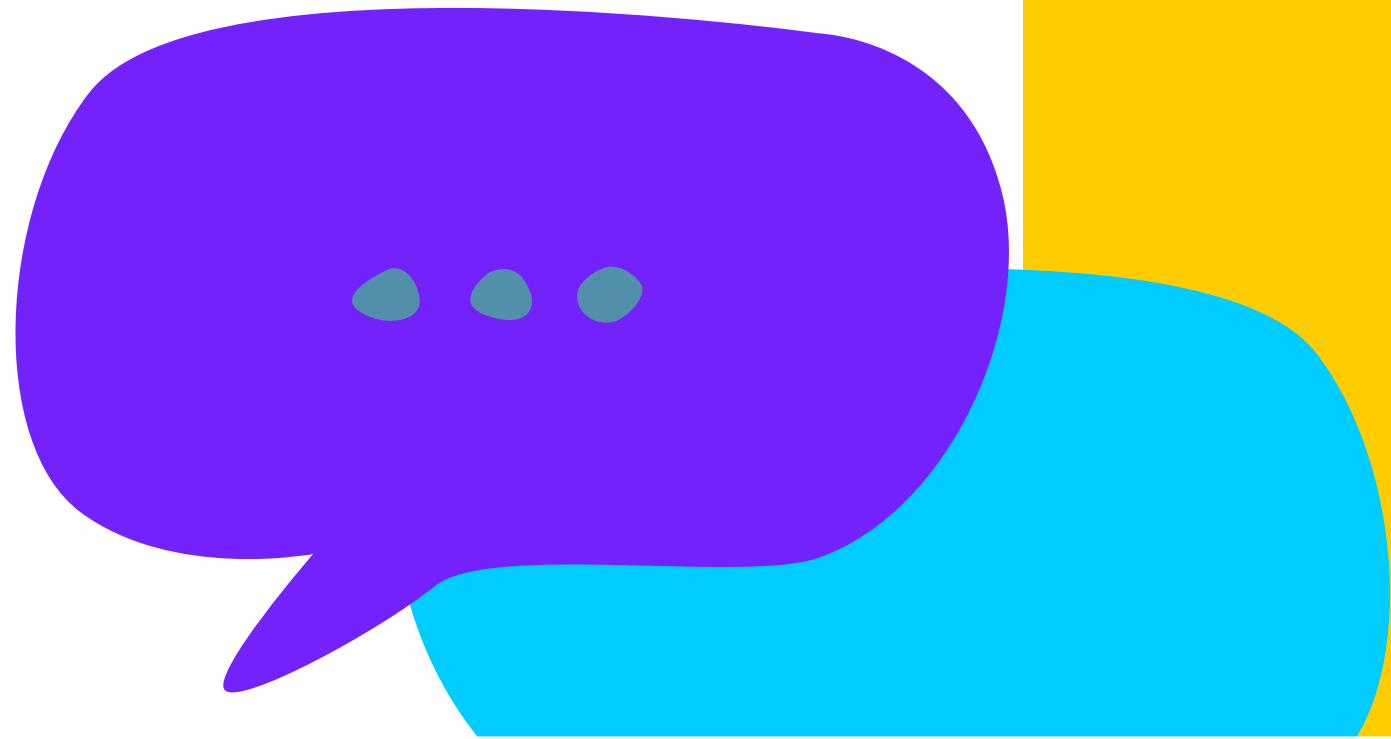
**3 Coding**

**4 Generating Themes**

**Let's Review  
some examples!**

**ChatGPT can quickly summarize lengthy qualitative data, articles and research, helping identify key themes and insights**

**1. Summarizing Text**



# 1. Prompt for Summarizing Text (General)

1

**Provide Context**

I am a program manager for a global health program funded by Global Affairs Canada operating in Kenya, Ethiopia and Ghana. I have collected data from five qualitative surveys. I am providing the data from the surveys here delineated by double quotation marks *“add data”*

2

**Ask Clearly**

Generate a concise summary based on the data I have provided. The summary should be insightful and use a gender-equality and intersectional lens.

3

**Specify the Output**

The summary should be no more than 200 words.




**CanWaCH**

Canadian Partnership for  
Women and Children's Health





## Example of our Community Interview on Access to Sexual and Reproductive Health Services

1. What is your age?
  2. What is your gender?
  3. What is your ethnicity?
  4. How easy is it to access sexual and reproductive health services in your community?
  - 5. What are the barriers or challenges community members face when it comes to accessing sexual and reproductive health services (if any)?
  6. How would you assess the quality of the sexual and reproductive health services in your community?
  7. Do you receive support from male family members in accessing sexual and reproductive health services?
- 



# 1. Prompt for Summarizing Text (Focused)

1

Provide Context

I am a program manager for a global health program funded by Global Affairs Canada operating in Kenya, Ethiopia and Ghana. I have collected data from five qualitative surveys. I am providing the data from the surveys here delineated by double quotation marks *“add data”*

2

Ask Clearly

Generate a concise summary based on the data I have provided, focusing on the research question: **“What are the barriers or challenges community members face when it comes to accessing sexual and reproductive health services?”** Utilize a gender-equality and intersectional perspective in your insights.

3

Specify the Output

The summary should be no more than 200 words.

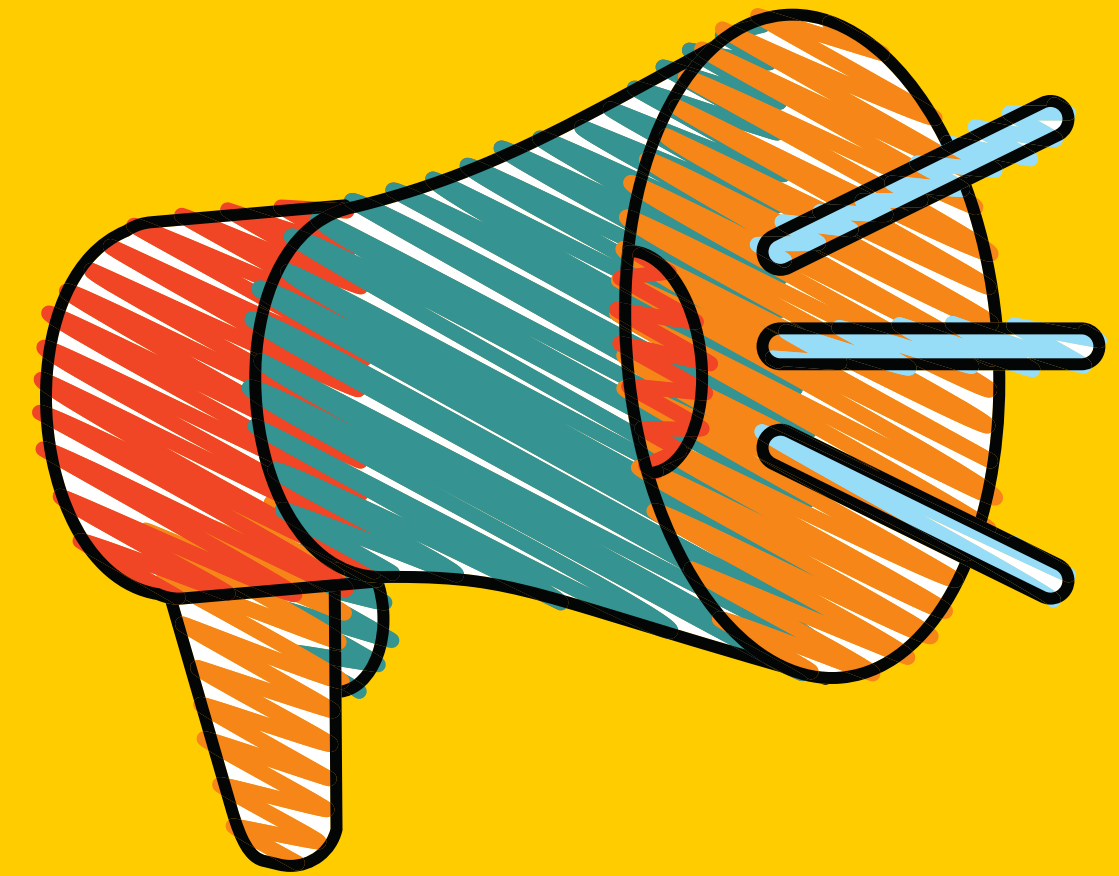


CanWaCH

Canadian Partnership for  
Women and Children's Health



**ChatGPT can significantly enhance the qualitative research process by automating the extraction of insightful quotes from interviews and qualitative data**



## 2. Extracting Quotes

# 2. Prompt for Extracting Quotes

1

Provide Context

I am a program manager for a global health program funded by Global Affairs Canada operating in Kenya, Ethiopia and Ghana. I have collected data from five qualitative surveys. I am providing the data from the surveys here delineated by double quotation marks *“add data”*

2

Ask Clearly

Review the data I provided and extract all quotes that specifically address the research question: **“What are the barriers or challenges community members face when it comes to accessing sexual and reproductive health services?”** An example would be “Language barriers can make it challenging to communicate with the healthcare providers, especially if they are not fluent in the local dialect.”

3

Specify the Output

(Optional: Include participant gender/geography)



CanWaCH

Canadian Partnership for  
Women and Children's Health



# 3. Coding



**ChatGPT can support in systematically categorizing and labeling segments of qualitative data to code data**

# What is Coding in qualitative analysis?



- Involves systematically assigning labels or codes to segments of qualitative data. These codes represent concepts, ideas, or patterns found in the data.
- Coding is a more granular and detailed level of analysis, breaking down the data into manageable units.



**CanWaCH**

Canadian Partnership for  
Women and Children's Health



# 3. Prompt for Coding Data

1

Provide Context

I am a program manager for a global health program funded by Global Affairs Canada operating in Kenya, Ethiopia and Ghana. I have collected data from five qualitative surveys. I am providing the data from the surveys here delineated by double quotation marks *“add data”*

2

Ask Clearly

Review the data I provided and develop codes addressing the following research question - **“What are the barriers or challenges community members face when it comes to accessing sexual and reproductive health services?”** Utilize a gender-equality and intersectional perspective in your insights.

3

Specify the Output

Each code should be between 2-5 words. Provide me with 5-10 codes based on the data and that address the research question provided.



CanWaCH

Canadian Partnership for  
Women and Children's Health



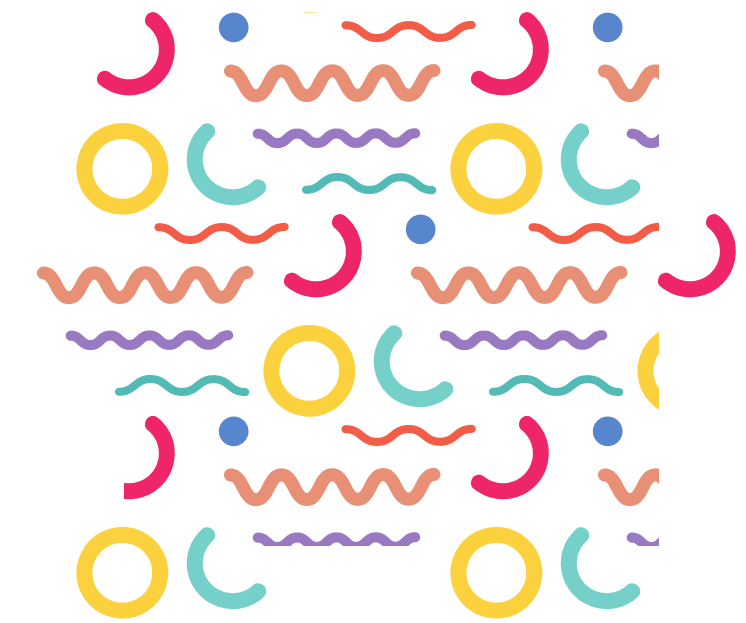


## 4. Generating Themes

**ChatGPT can support in systematically categorizing and labeling segments of qualitative data to code data, identify patterns, themes, and relationships**

# What does it mean to Generate Themes?

- After coding, researchers move to the next step of generating themes.
- Themes emerge through the identification and grouping of related codes that share commonalities or connections.
- This process involves a higher level of abstraction, as researchers synthesize codes to create overarching themes that represent patterns or concepts in the data.



**CanWaCH**

Canadian Partnership for  
Women and Children's Health





# 4. Prompt for Generating Themes from Codes

1

Provide Context

I am a program manager for a global health program funded by Global Affairs Canada operating in Kenya, Ethiopia and Ghana. I have collected data from five qualitative surveys. I am providing the data from the surveys here delineated by double quotation marks `""add data""`

2

Ask Clearly

Categorize the codes leading to the development of themes addressing the following research question - **“What are the barriers or challenges community members face when it comes to accessing sexual and reproductive health services?”** Utilize a gender-equality and intersectional perspective in your insights.

3

Specify the Output

Each theme should be between 2-5 words. Generate not more than 6 themes.



CanWaCH

Canadian Partnership for  
Women and Children's Health



# Great Resource: Using ChatGPT to Analyze Qualitative Data by Philip Adu, Ph.D

The screenshot shows a YouTube playlist interface. On the left, the playlist title is "ChatGPT plus Research and Data Analysis" by Philip Adu, Ph.D. Below the title are options for "Play all" and "Shuffle". The main area displays a list of five videos:

- ChatGPT in Depth: Exploring AI From A Qualitative Researcher's Lens** (37:31) - Philip Adu, Ph.D. • 1.1K views • 2 months ago
- Mastering ChatGPT Prompting with Three Simple Techniques** (26:30) - Philip Adu, Ph.D. • 699 views • 2 months ago
- Master Qualitative Data Analysis with ChatGPT: An 18-Minute Guide** (18:02) - Philip Adu, Ph.D. • 11K views • 2 months ago
- Revolutionizing Qualitative Analysis: ChatGPT & NVivo for Unstructured Data (Case Study of...)** (49:51) - Philip Adu, Ph.D. • 4.3K views • 5 months ago
- How to use #ChatGPT to develop an Action Plan (#promptengineering)** (6:12) - Philip Adu, Ph.D. • 755 views • 8 months ago

- [https://www.youtube.com/watch?v=stB9oeKvw2Y&list=PLSOjmgd2Fg\\_IL1kovKk2mWQSVKubjrG3e](https://www.youtube.com/watch?v=stB9oeKvw2Y&list=PLSOjmgd2Fg_IL1kovKk2mWQSVKubjrG3e)



# Salanga

**We are reimagining the purpose and practice of monitoring, evaluation & learning to advance gender equality, inclusion and community-driven change.**

We provide tools, training and technology services in monitoring, evaluation, accountability and learning (MEAL) to organizations around the world

<https://salanga.org/>

